



UNITEDSEATS

your global seat supplier

SAFETY BELTS

Recommended retail price list in **£ sterling**
Prices advised exclude carriage costs and VAT
valid until 31/12/2017



For more information about UnitedSeats
visit www.unitedseats.com
or e-mail us at info@unitedseats.com



Recommended
retail price in £ Sterling



£ 15,²⁰

ON.150754

Automatic 2-point seat belt ALR

Belt length: 120 cm

Buckle 15 cm

Belt colour: black

With fitting kit



£ 19,⁹⁵

ON.150810

Automatic 2-point seat belt ALR

Belt length: 120 cm

Buckle 12 cm

Belt colour: black

With fitting kit



£ 19,⁵⁵

ON.150763

Automatic 2-point seat belt ALR

Belt length: 120 cm

Flex buckle 24 cm

Belt colour: black



£ 20,⁸⁰

ON.151100

Automatic 2-point seat belt ALR

Belt length: 120 cm

Flex buckle 22 cm

Belt colour: black

With fitting kit



£ 21,⁷⁵



Recommended
retail price in £ Sterling

ON.150756

Automatic 2-point seat belt ALR
Belt length: 120 cm
Buckle 15 cm
Belt colour: orange
With fitting kit



£ 23,⁴⁵

ON.151000

Automatic 2-point seat belt ALR
Belt length: 120 cm
Buckle 15 cm + Switch NO/NC
Belt colour: black
With fitting kit



£ 37,³⁵

ON.150756 S

Automatic 2-point seat belt ALR
Belt length: 120 cm
Buckle 15 cm + switch NO/NC
Belt colour: orange
With fitting kit



£ 38,²⁵

ON.150757 S

Automatic 2-point seat belt ALR
Belt length: 120 cm
Buckle 15 cm + switch NO/NC
Belt colour: yellow
With fitting kit



£ 38,²⁵

ON.150775

Automatic 2-point seat belt ALR
Belt length: 120 cm
Buckle 15 cm + switch NO/NC
Belt colour: red
With fitting kit



£ 39,¹⁵



Recommended
retail price in £ Sterling

ON.150900

Automatic 2-point seat belt ELR
Duo sensitive
Belt length: 220 cm
Flex buckle 27 cm
Belt colour: black
With fitting kit



£ 34,⁷⁵

ON.151003

Automatic Securon 2-point seat belt ELR
Duo sensitive
Belt length: 110 cm
Flex buckle 25 cm + switch NO/NC
Belt colour: black
With fitting kit



£ 60,⁸⁵

ON.151005

Automatic Securon 2-point seat belt ALR
Belt length: 110 cm
Fixed buckle 15 cm + switch NO/NC
Belt colour: black
With fitting kit



£ 56,⁵⁰

ON.151006

Automatic Securon 2-point seat belt ALR
Belt length: 110 cm
Fixed buckle 15 cm + switch NO/NC
Belt colour: orange
With fitting kit



£ 59,¹⁵

ON.150745

Double seat belt set ALR
Belt length: 120 cm (x2)
Belt colour: black



£ 47,⁸⁰



Recommended
retail price in £ Sterling

ON.151102

Static 3-point seat belt adjustable

Belt length: 230 cm

Flex buckle 30 cm

Belt colour: black

With fitting kit



£ 24,⁸⁰

ON.151103

Automatic 3-point seat belt ELR

Belt length: 270 cm

Flex buckle 22 cm

Belt colour: black

With fitting kit



£ 35,⁶⁵

ON.151106

Automatic 3-point C1 seat belt ELR

Belt length: 270 cm

Flex buckle 30 cm

Belt colour: black

With fitting kit



£ 38,²⁰

ON.151107

Automatic 3-point seat belt ELR

Belt length: 360 cm

Fixed buckle 15 cm

Belt colour: orange

With fitting kit



£ 66,⁹⁰

ON.151108

Automatic 3-point seat belt ELR

Belt length: 350 cm

Flex buckle 30 cm

Belt colour: yellow

With fitting kit



£ 68,⁶⁵



Recommended
retail price in £ Sterling

ON.151109

Automatic 3-point seat belt ELR
Belt length: 310 cm
Flex buckle 30 cm
Belt colour: black
With fitting kit



£ 64,³⁵

ON.150855

Static 4-point seat belt
Adjustable in length
No FIA approval
Belt colour: red



£ 103,⁴⁵

ON.151368

Seat belt lock
Flex buckle 30 cm



£ 11,³⁰

ON.151365

Seat belt lock
Flex buckle 25 cm



£ 10,⁸⁵

ON.151367

Seat belt lock
Flex buckle 22 cm



£ 9,⁵⁰



Recommended
retail price in £ Sterling

ON.151360

Seat belt lock
Buckle 15 cm



£ 9,⁵⁵

ON.151351

Seat belt lock
Buckle 12 cm



£ 10,-

ON.151415

Seat belt lock
Buckle 15 cm + NO/NC switch



£ 19,⁵⁵

ON.151420

Seat belt lock extension
Length: 48 cm
Belt colour: black



£ 12,¹⁵



UNITEDSEATS

your global seat supplier

Product information

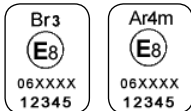
Our products are manufactured, tested and approved to European /National Standards as and when required, i.e. ECE R16, SAE J386 & ISO 6683. Identification of the relevant standard is carried on the product.

- ECE Regulation 16:** Restraint for cars, coaches etc. for UK and European road use
- SAE J386:** Pelvic Restraint Systems for off road work Machines
- ISO 6683:** Seat Belts & Seat Belt Anchorages (earth moving machinery)

Explanation of seat belts variants

ALR = Automatic Locking Retractor
ELR = Emergency Locking Retractor (Duo Sensitive)

Approval (E & e) E = ECE R16 e = EEC Directive 77/541



ECE = Economic Commission for Europe
EEC = European Economic Community
ISO = International Organisation for Standardisation

A = 3 or 4 point mounting Lap and Diagonal Belt
B = 2 point mounting Lap Belt
r = Safety belt with retractor
3 = Automatic locking retractor
4 = Emergency locking retractor
m = Multiple sensitivity

CE Marking

Seat Belts are independently tested and certified to European Directive 77/541 and/or Regulation 16 - they should not be CE marked. The latter can be confirmed by any Notified Body, i.e. B.S.I., C.S.I. etc.

CE marking is in many cases a subjective analysis with limited or no testing and no guaranteed base line performance.

Seat belts save lives - If they are in good condition!

In an accident a seat belt becomes a life saver. But wear & tear and abuse all cause the seat belt to deteriorate. Holes, cuts, fraying or fluffing weaken the belt, can obstruct its operation, and/or cause slackness. Loads in an accident can reduce the effectiveness of the belt. In a severe impact the seat belt loading is approximately equal to the weight of a three tonne elephant! After an accident, in all cases, the complete seat belt should be replaced.

Safety instructions

- These instructions should be passed to the owner/driver.
- The belt is designed for use by one person and must not be put around a child seated on a persons lap.
- It is important to wear the belt on each journey.
- The belt is suitable for restraining most child seats and boosters.
- It is not intended for children under 6 years of age unless used with other approved restraints.
- The belt should at all times be adjusted and used in accordance with the instructions. No excessive slackness should be present.
- Once installed the diagonal should pass across the centre of the shoulder and the buckle should lie just on or below the hip.
- Avoid twisting the webbing during use. Webbing must not be allowed to chafe, i.e. against sharp edges.
- Do not make alterations or additions to the belt. If in doubt, consult the manufacturer.
- Belts that have been cut, frayed, damaged or stressed through impact should be replaced. After impact, the car anchorage points should also be checked.
- To clean use warm soapy water only. Do not use chemical cleaners, bleach or dye. Contamination with petrol, grease and acid will be detrimental.
- Periodic inspection of the installation will ensure reliable service of the seat belt.

UNITEDSEATS

Schrijnwerkersstraat 10
3334 KH Zwijndrecht

The Netherlands

T: +31 (0)88 - 0158 700

E: info@unitedseats.com

I: www.unitedseats.com

We unite
your seat